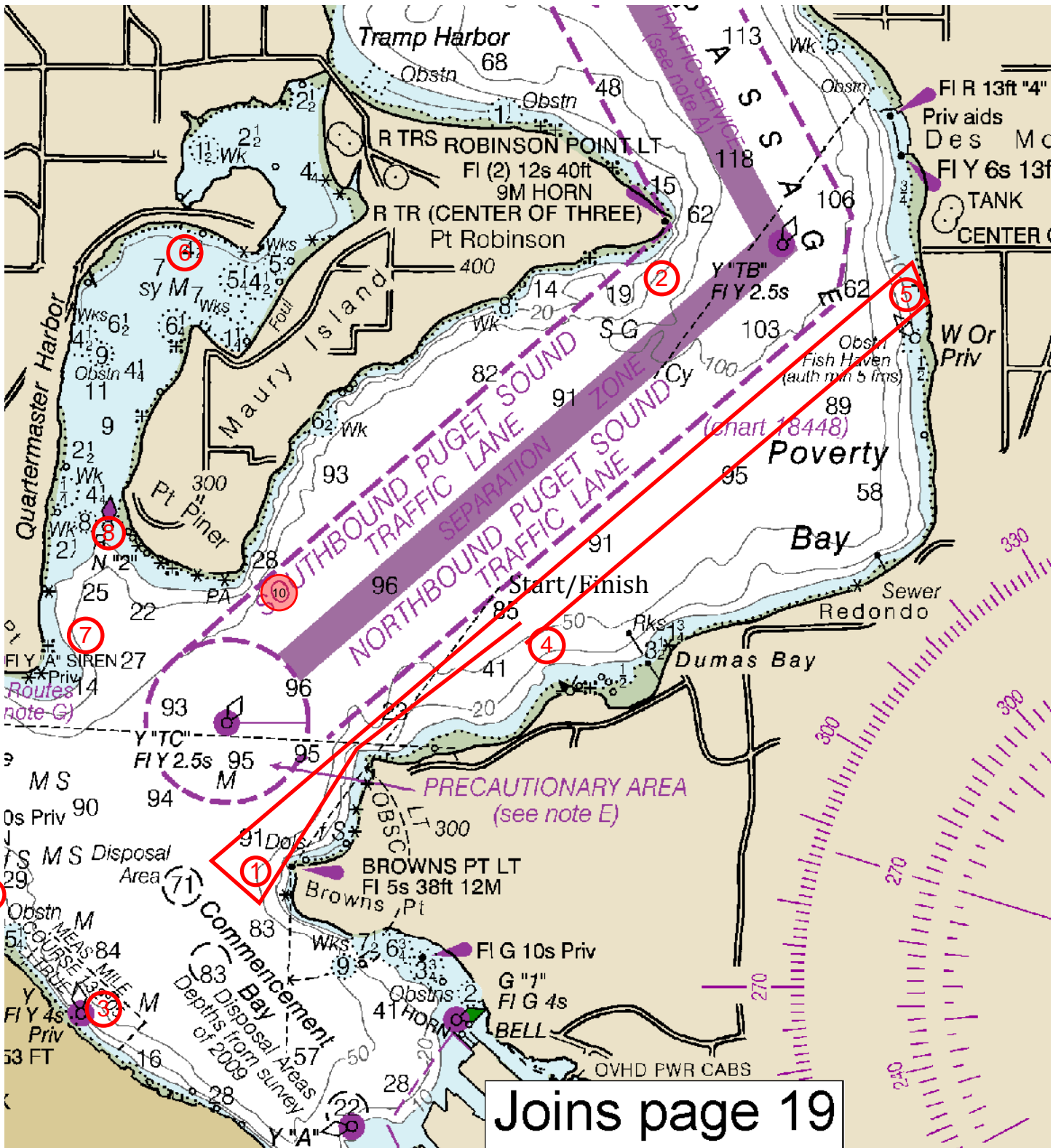


# Zenith Harbor Race



Joins page 19

- |  |   |
|--|---|
| 1. Brown's Point (CYCT Temp*)                    | 6. Quermaster Harbor (CYCT Temp*)           |
| 2. Point Robinson (TTPYC Mark - White PVC Pipe)  | 7. Neill Point (CYCT Temp*)                 |
| 3. Outfall Mark (Perm - Yellow)                  | 8. Manzanita Buoy (Perm - Red)              |
| 4. Temp Mark south end of Dumas Bay (CYCT Temp*) | 9. Pt Ruston Buoy (TYC Mark - White 3' Can) |
| 5. Zenith Harbor (TTPYC Mark - White PVC Pipe)   | 10. Pt. Piner Buoy (CYCT Temp*)             |

\* All CYCT Temp Marks are inflatable