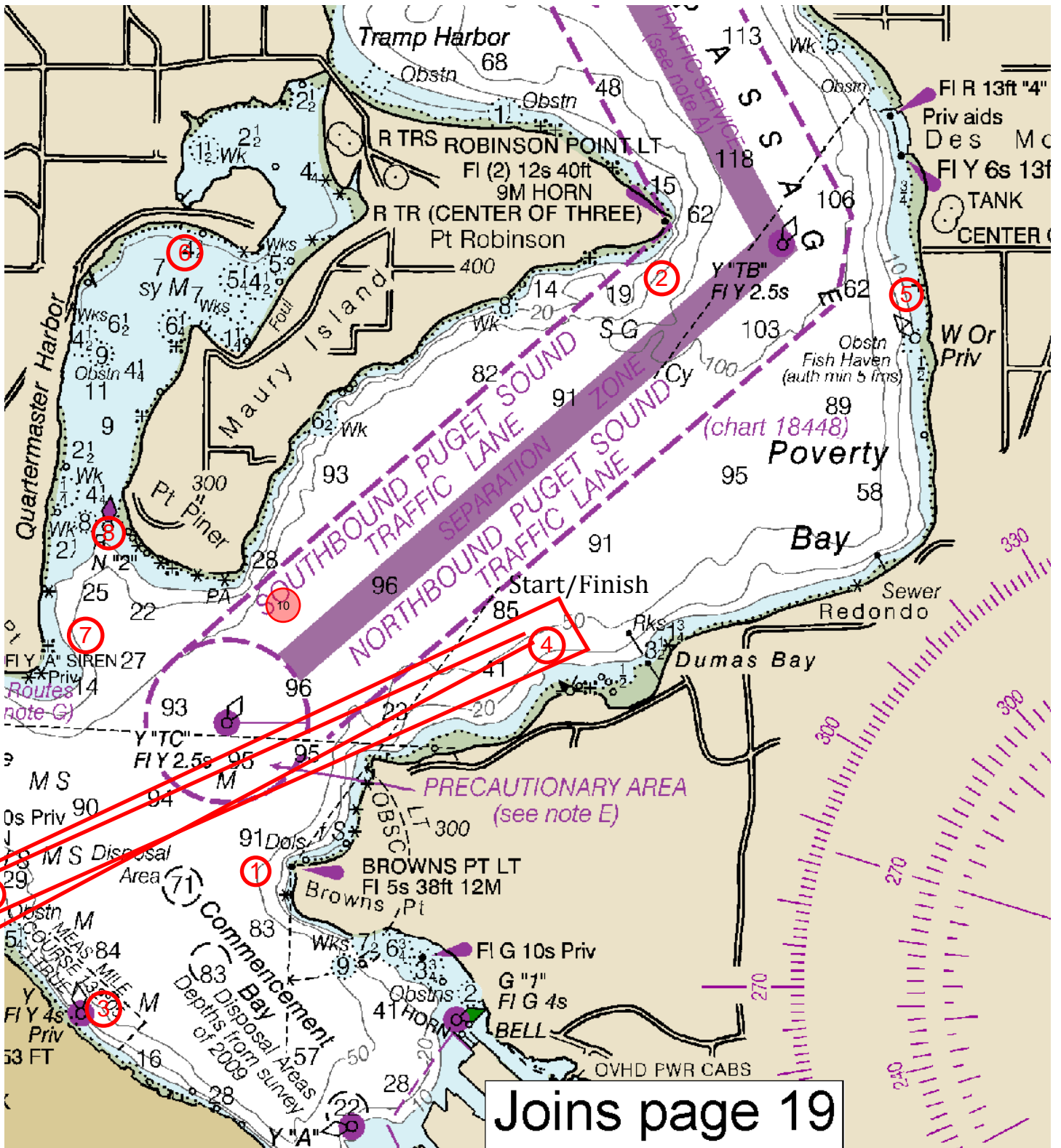


Pt. Ruston Race



Joins page 19

- | | |
|--------------------------------------------------|---------------------------------------------|
| 1. Brown's Point (CYCT Temp*) | 6. Quartermaster Harbor (CYCT Temp*) |
| 2. Point Robinson (TTPYC Mark - White PVC Pipe) | 7. Neill Point (CYCT Temp*) |
| 3. Outfall Mark (Perm - Yellow) | 8. Manzanita Buoy (Perm - Red) |
| 4. Temp Mark south end of Dumas Bay (CYCT Temp*) | 9. Pt Ruston Buoy (TYC Mark - White 3' Can) |
| 5. Zenith Harbor (TTPYC Mark - White PVC Pipe) | 10. Pt. Piner Buoy (CYCT Temp*) |

* All CYCT Temp Marks are inflatable